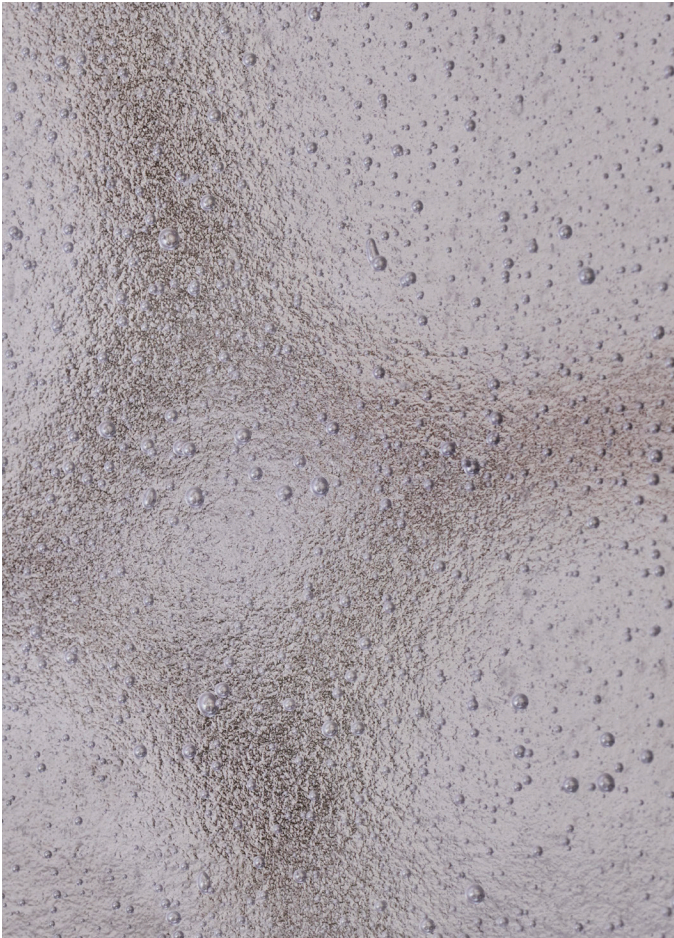


STITES CIRCULAR COCKTAIL TABLE



STITES CIRCULAR COCKTAIL TABLE

MODEL NO: 10090101

Hand cast, clear glass crystal table top with constellation inspired bubble pattern top on satin pale bronze metal base with hand turned wood legs.

AS SHOWN (IN PHOTO)

Metal - satin pale bronze
Wood - dark walnut

DIMENSIONS

Overall - 45"W x 16.5"H

AVAILABLE FINISHES

Glass - hand poured, clear glass crystal with constellation inspired bubble pattern

Metal - satin pale bronze

Wood - white ash, medium walnut, ebonized ash

ADDITIONAL NOTES

General lead time for standard finishes is 12-14 weeks. Updated lead times provided at time of formal quoting.

